

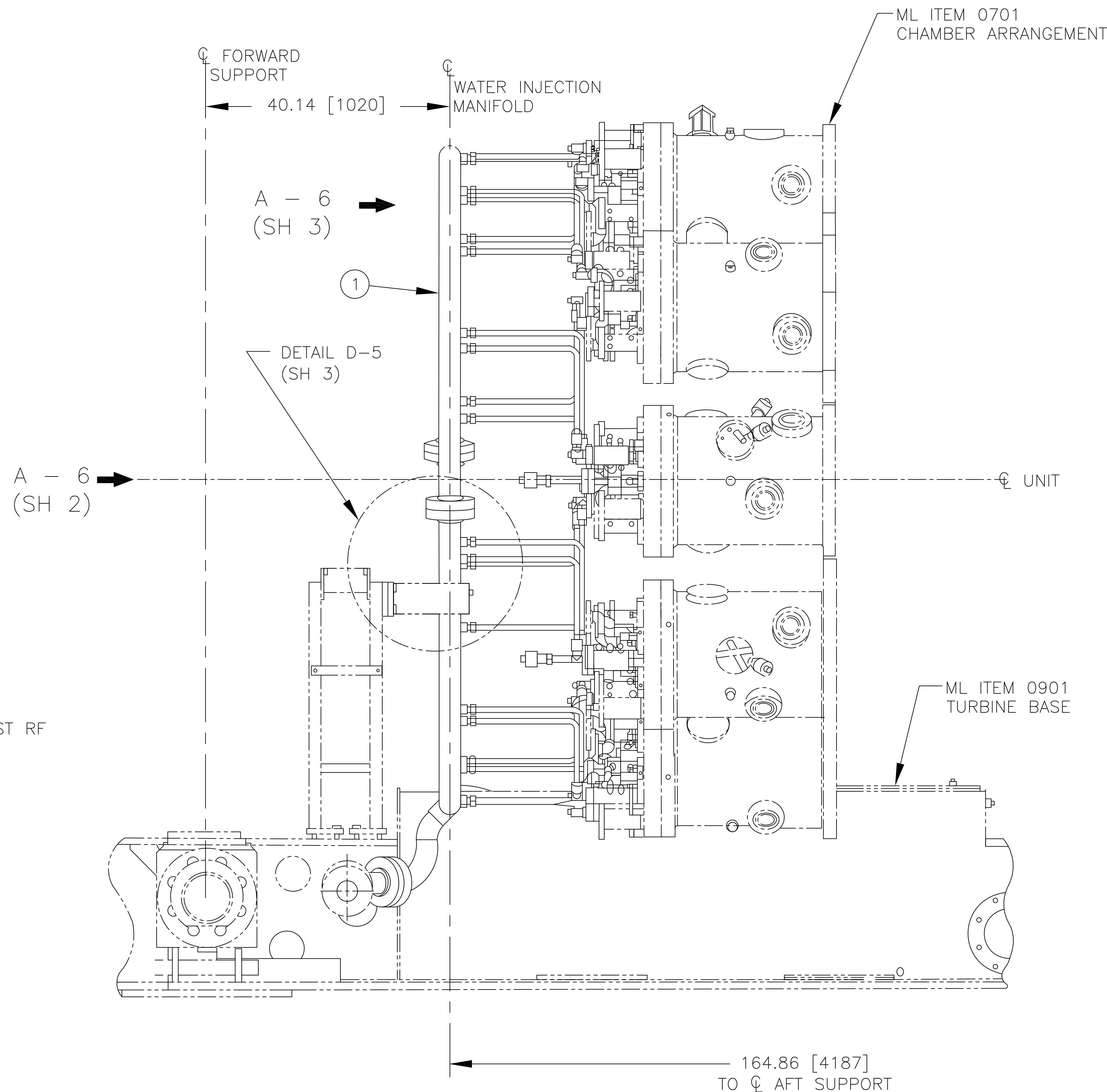
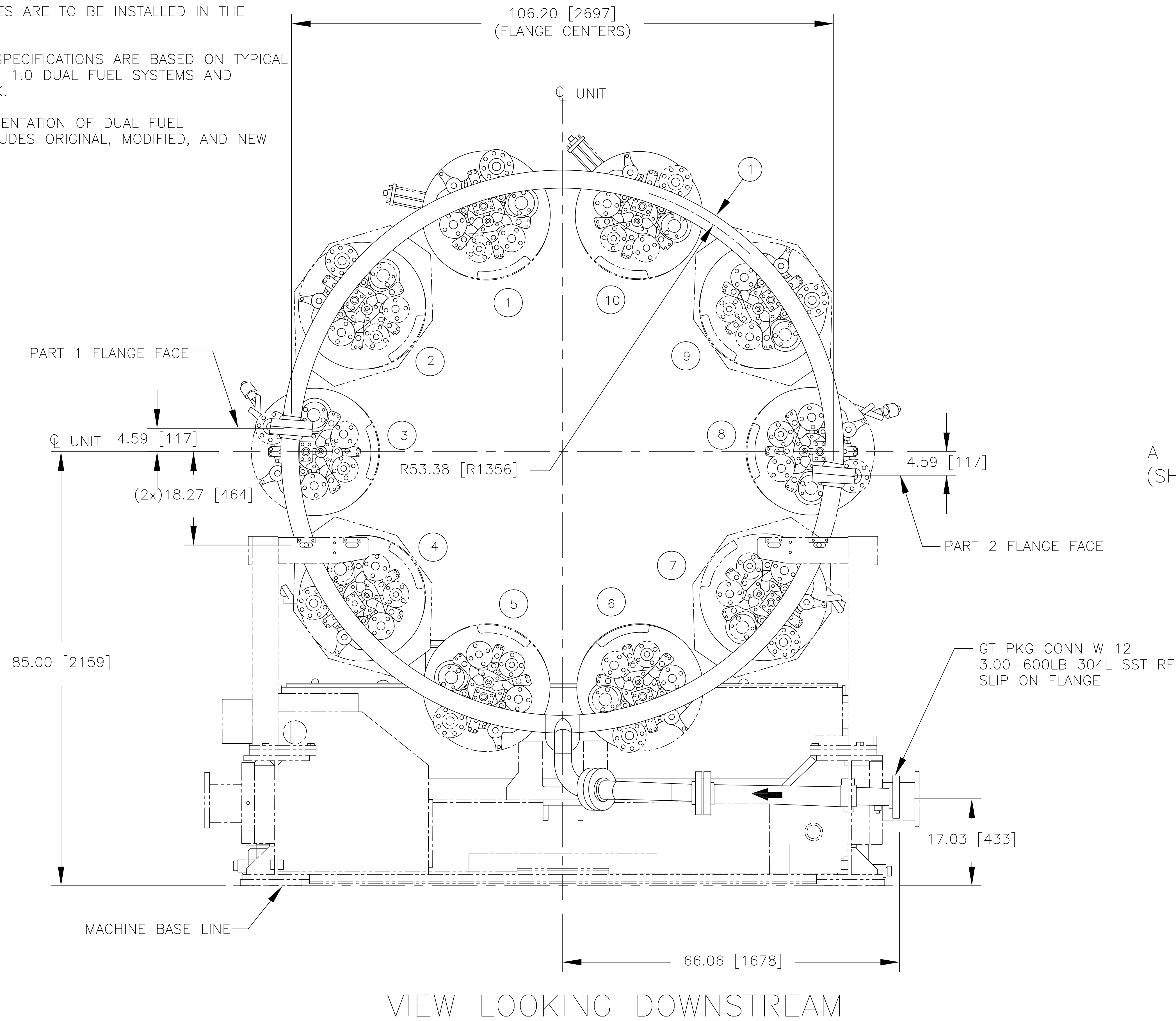
NOTES:

1. GENERAL MACHINING APPLIED PRACTICES ARE PER 348A9200.
2. PIPING APPLIED PRACTICES ARE PER 351A3700.
3. PIPING WELDS ARE PER P8A-AG3, FILLER MATERIAL IS PER COLUMN AE-L UNLESS OTHERWISE SPECIFIED IN THIS DOCUMENT.
4. STRUCTURAL WELDS ARE PER P8A-AG1, FILLER MATERIAL IS PER COLUMN AB UNLESS OTHERWISE NOTED.
5. INSTALL AND SUPPORT TUBING PER 215A4435.
6. INSTALL TUBE UNIONS AS REQUIRED.
7. TUBE RUNS ARE ILLUSTRATIVE ONLY.
8. CLEAN AND PAINT PER ML ITEM 0108.
9. FLOW DIRECTION IS DESIGNATED WITH AN ARROW SYMBOL.
10. VCK8-1 THRU 10 CORRESPOND TO COMBUSTION CHAMBER NUMBER 1 THRU 10 RESPECTIVELY & VCK8-11 THRU 20 CORRESPOND TO COMBUSTION CHAMBER 1 THRU 10 RESPECTIVELY. CHECK VALVES ARE TO BE INSTALLED IN THE DIRECTION OF THE ARROW.
11. SYSTEM PARAMETERS AND SPECIFICATIONS ARE BASED ON TYPICAL REQUIREMENTS FOR 7EA DLN 1.0 DUAL FUEL SYSTEMS AND CUSTOMER SCOPE OF WORK.
12. THIS DRAWING IS A REPRESENTATION OF DUAL FUEL CONFIGURATION WHICH INCLUDES ORIGINAL, MODIFIED, AND NEW EQUIPMENT.

PARTS LIST			
ITEM	QTY	DESCRIPTION	VENDOR
1	20	WATER INJECTION HEADER – ASSEMBLY	Pro Energy Services
2	30	CHECK VALVE (VCK8-10 TO VCK8-20)	JASC
3	60FT [18288]	ø3/4" x 0.065" TUBING SS	
4	20	1"NPT x 3/4" TUBE FITTING	SWAGELOK
5	20	3/4" TUBE x 1"NPT TEE FITTING	SWAGELOK






**IMPORTANTE**  
ESTE PLANO FUE ELABORADO EN AUTOCAD V.2008  
CUALQUIER MODIFICACION REALIZADA EN CAMPO  
DEBERA SER NOTIFICADA A LA UNIDAD  
RESPONSABLE.  
QUEDA PROHIBIDO CORREGIR ESTE PLANO SIN  
AUTORIZACION DE ESTA UNIDAD.

ALL DIMENSIONS IN BRACKETS [ ]  
ARE MILLIMETER; EXPRESSED  
DIMENSIONS ARE INCHES

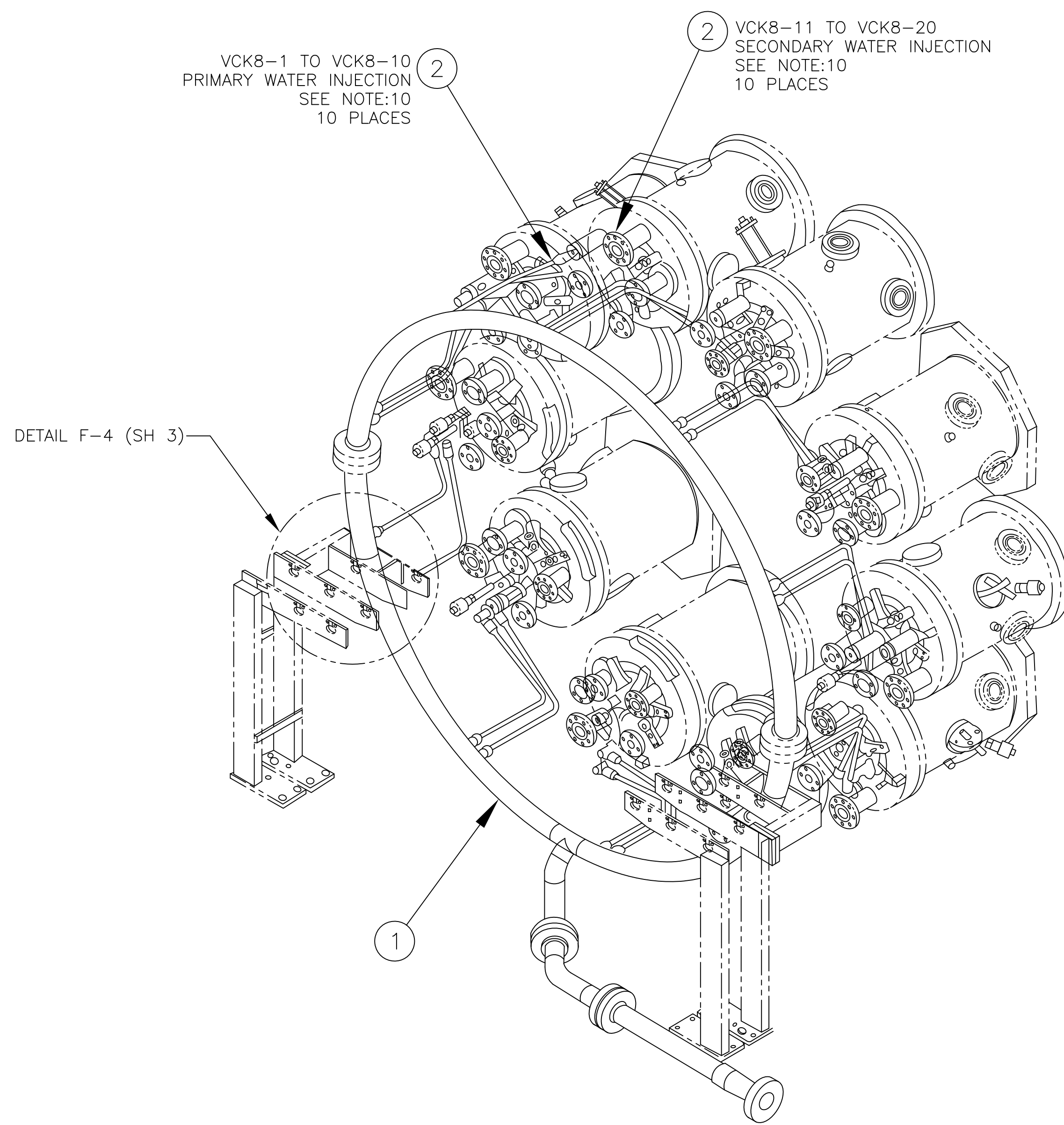


▲					
▲					
▲					
▲	07/04/11	ISSUED FOR FABRICATION, SEE NOTE 11	SAB	CB	TK
REV.	FECHA	REVISIONES O MODIFICACIONES	DIBUJO	REVISO	APROBO

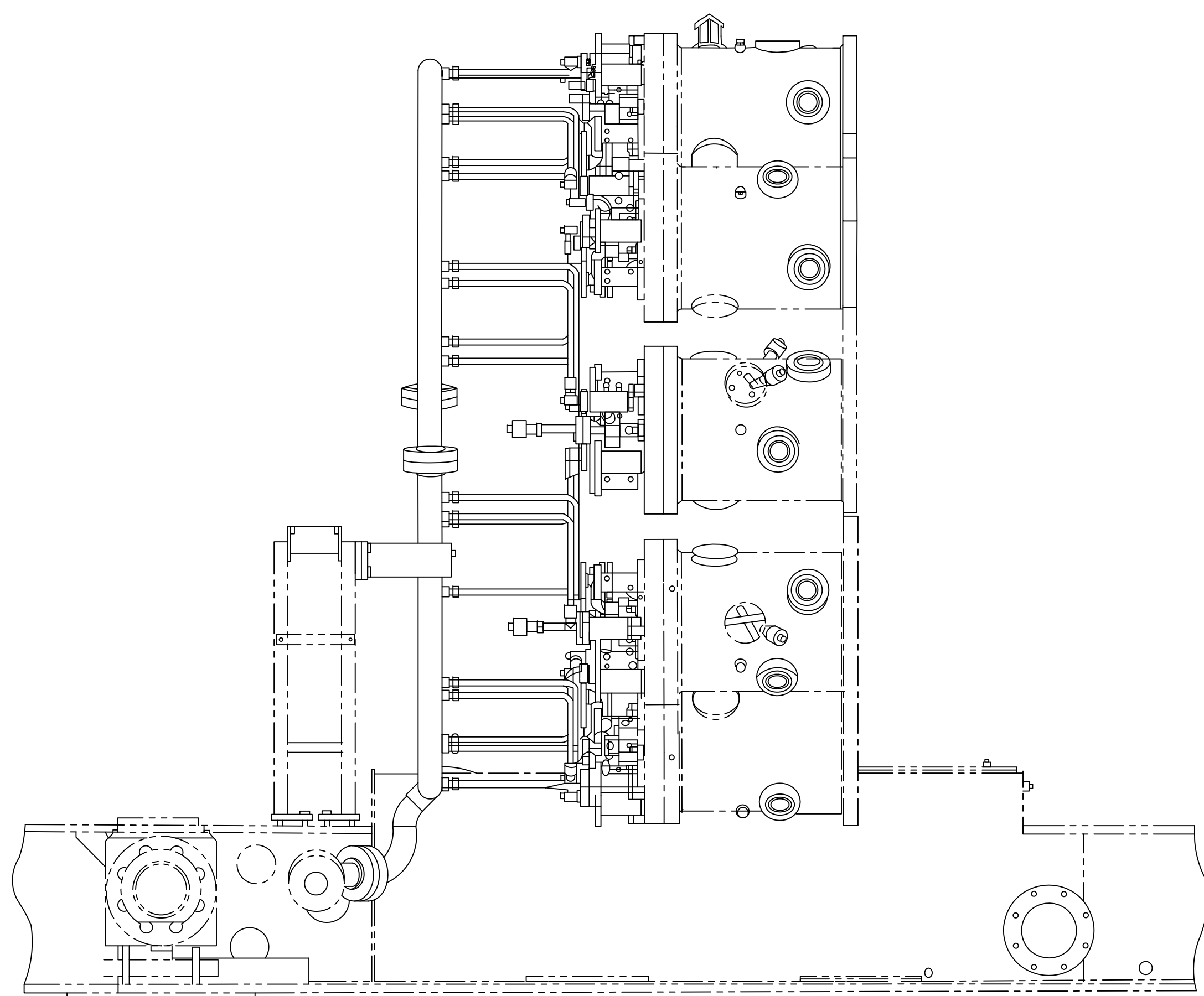
REF. FABRICANTE		
REF. FABRICANTE	FABRICANTE	O/C:

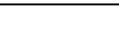
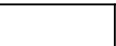



<p>AGM-02-0204-PLA-M-0202 FUEL NOZZLE PURGE</p> <p>N° DE DOCUMENTO DESCRIPCIÓN REV. FECHA</p> <p>DOCUMENTOS DE REFERENCIA</p>									
<p>      </p> <p>AMPLIACIÓN DE LA CAPACIDAD DE GENERACIÓN Y TRANSPORTE DE ELECTRICIDAD EN LA ISLA DE MARGARITA</p> <p>WATER INJECTION PIPING</p> <p>DUAL FUEL MOD. UNITS 298034 &amp; 298035</p> <p>(MLU 0968)</p>									
PLANT N°:	REV:	PROYECTO:		ESCALA:	1:10	PLANT N°:			
PROYECTO N°: 402-2006-1		CALCULO:		FECHA:	07/04/11	AGM-02-0204-PLA-M-0202			
REVISADO:	C. Brown	REVISADO:		J. Castillo	APRUEBA:				
REVISADO:	S. Boerckel	REVISADO:		M. Monticelli	APRUEBA:				
APROBADO:	T. Kozart	REVISADO:		REVISADO:	APRUEBA:				
APROBADO:	ADG	REVISADO:		REVISADO:	APRUEBA:				
						PAGINA:	1	DE	3
						<div style="border: 1px solid black; padding: 2px; display: inline-block;">             REV 0           </div>			



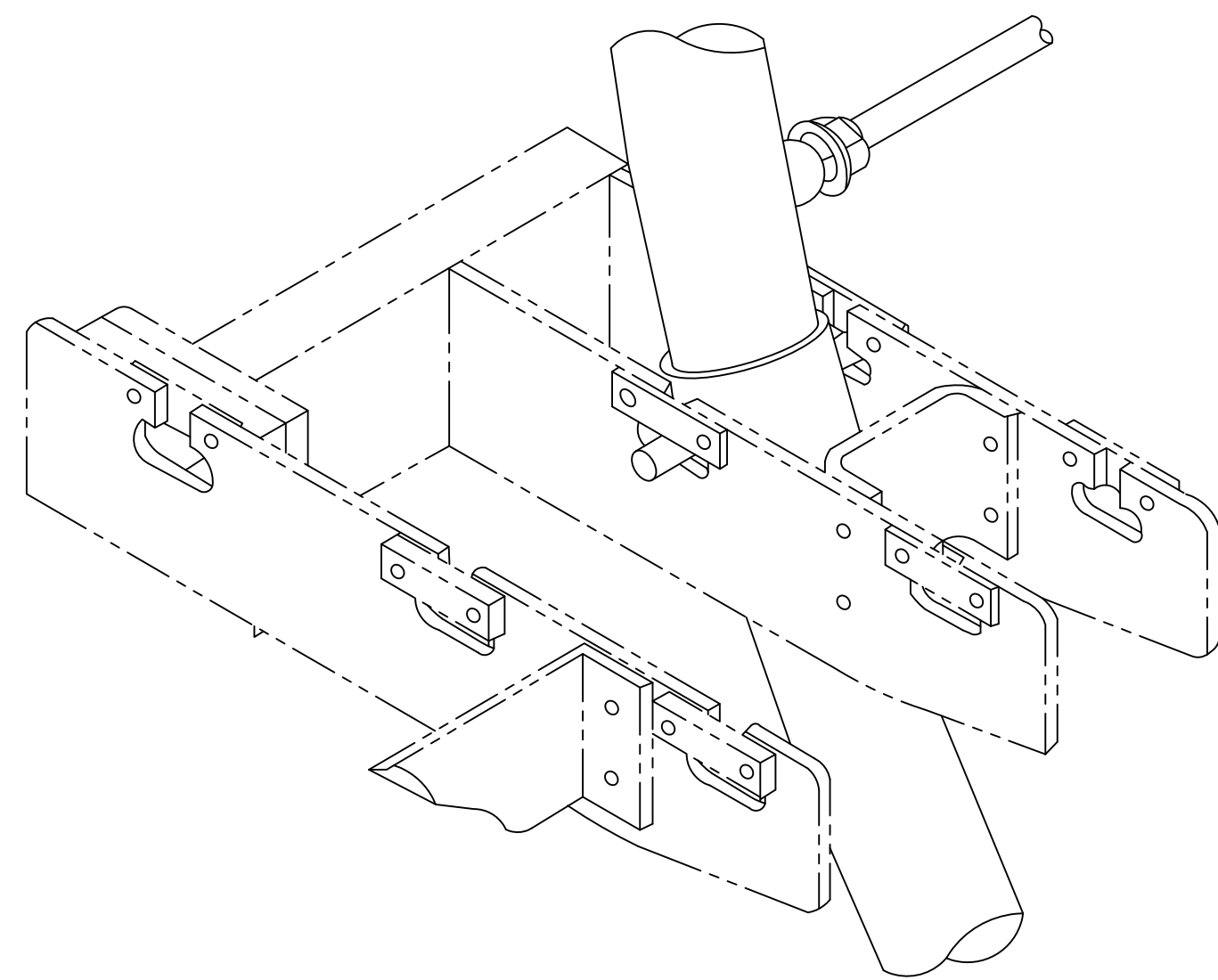


ISOMETRIC VIEW

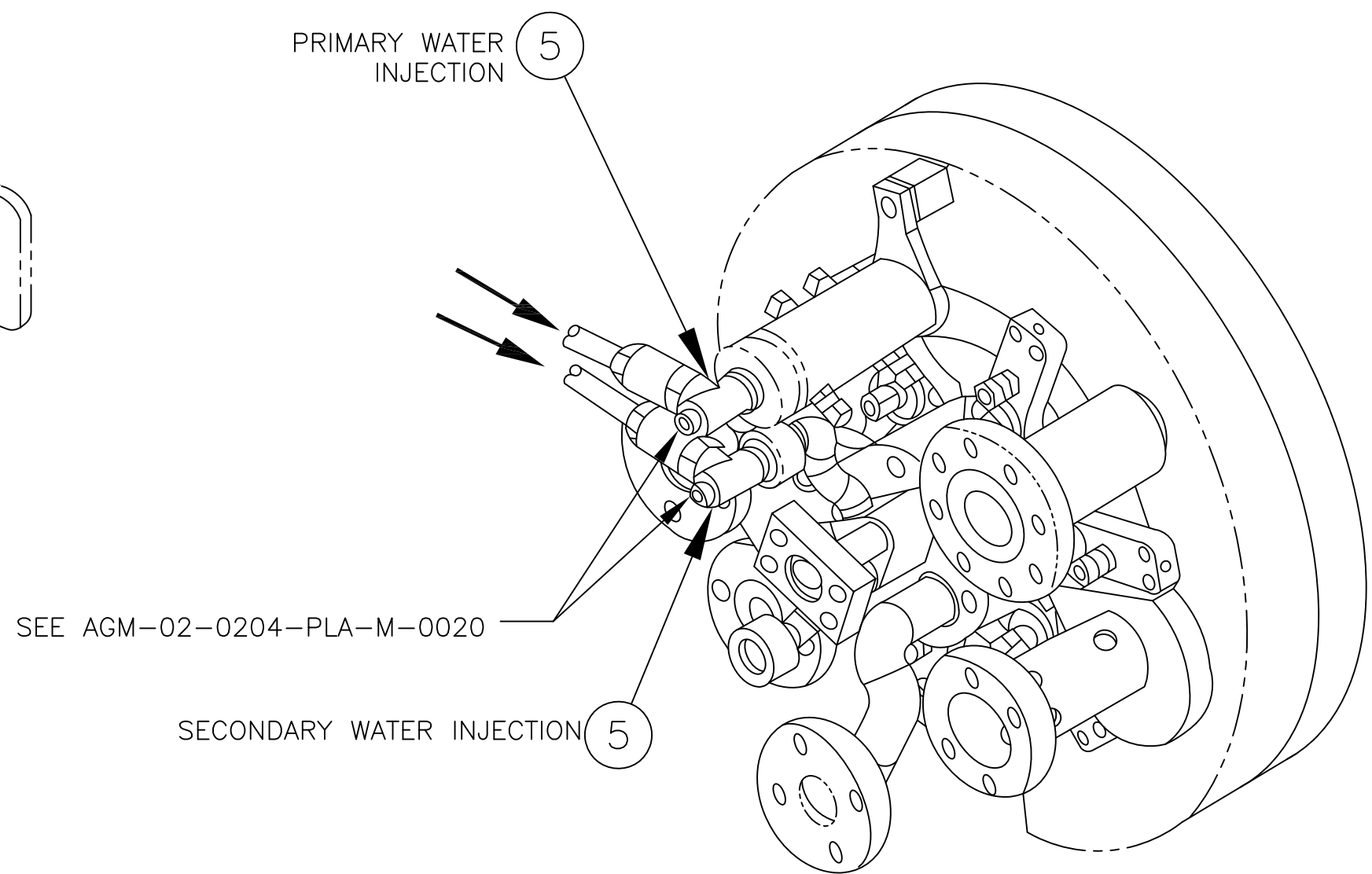


    		<b>AMPLIACIÓN DE LA CAPACIDAD DE GENERACIÓN Y TRANSPORTE DE ELECTRICIDAD EN LA ISLA DE MARGARITA</b> <b>WATER INJECTION PUMPING</b> <b>DUAL FUEL MOD. UNITS 298034 &amp; 298035</b> <b>(MLI 0968)</b>		<b>PLANO N°</b>  <b>PROYECTO N°</b> 4008-29803-1  <b>CALCULO</b>  REVISADO: C. Brown DIBUJO: S. Boerckel APROBADO: T. Kootz		<b>REV.</b>  ESCALA: 1:15 FECHA: 07/04/11  DISEÑO: J. Castillo DIBUJO: S. Boerckel APROBADO: M. Monticelli		<b>PÁGINA</b> NÚM. 02-0204-PLA-M-0027  PÁGINA: 2 DE 3 REV. 0	
---	--	--	--	--	--	---	--	--	--

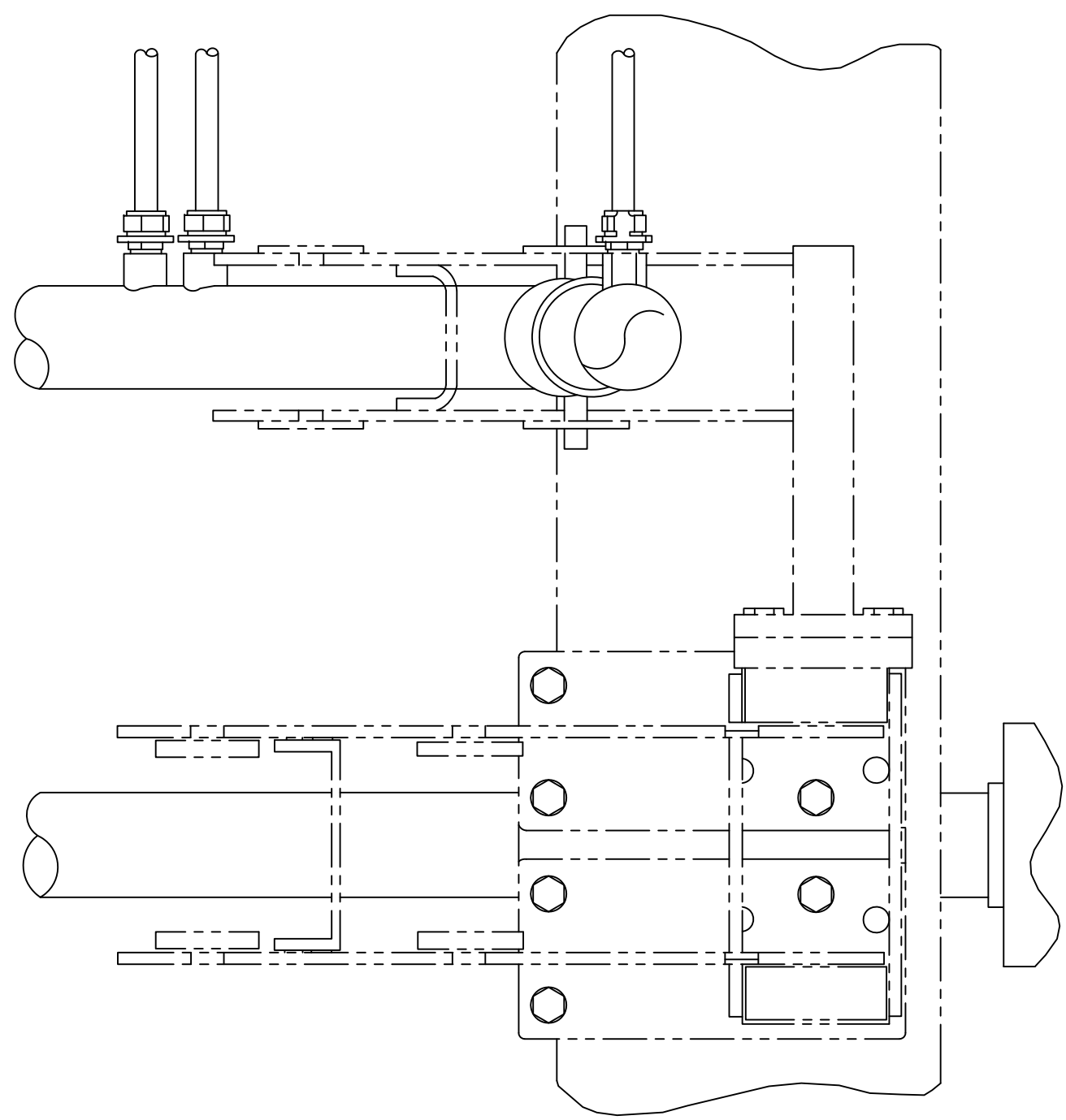




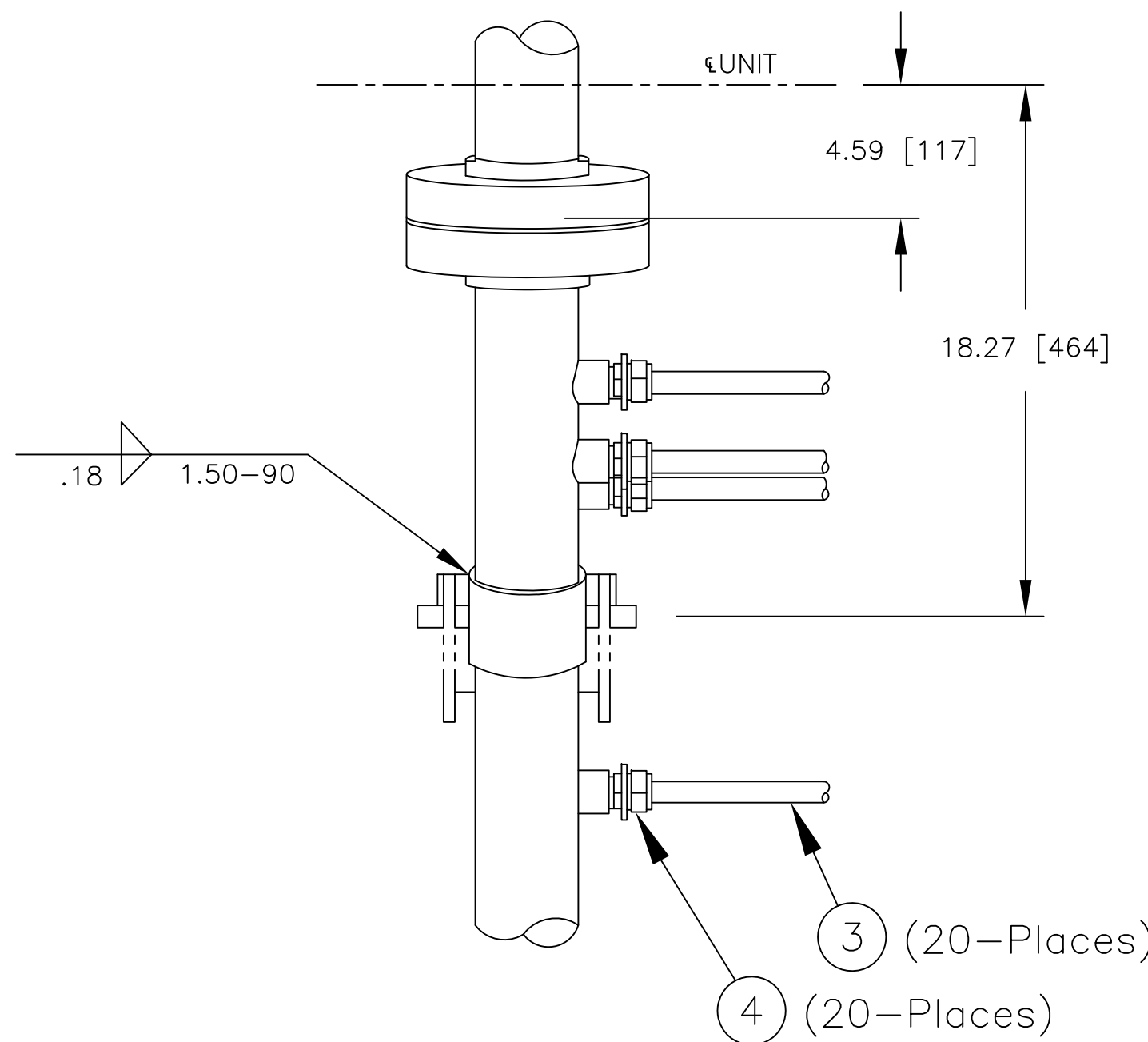
DETAIL F-4 (SH2)  
( 2 PLACES )



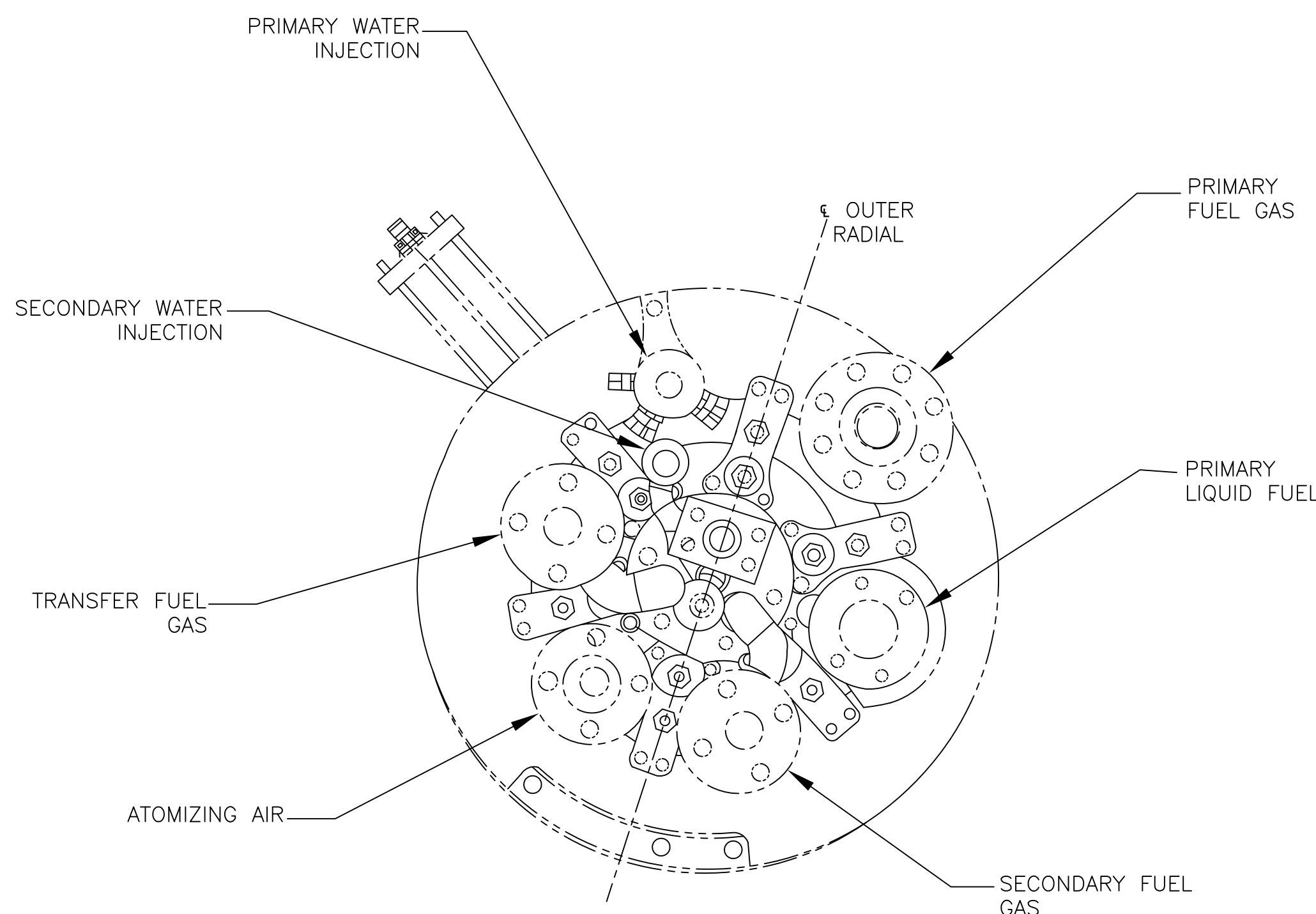
DETAIL F-2  
10 PLACES



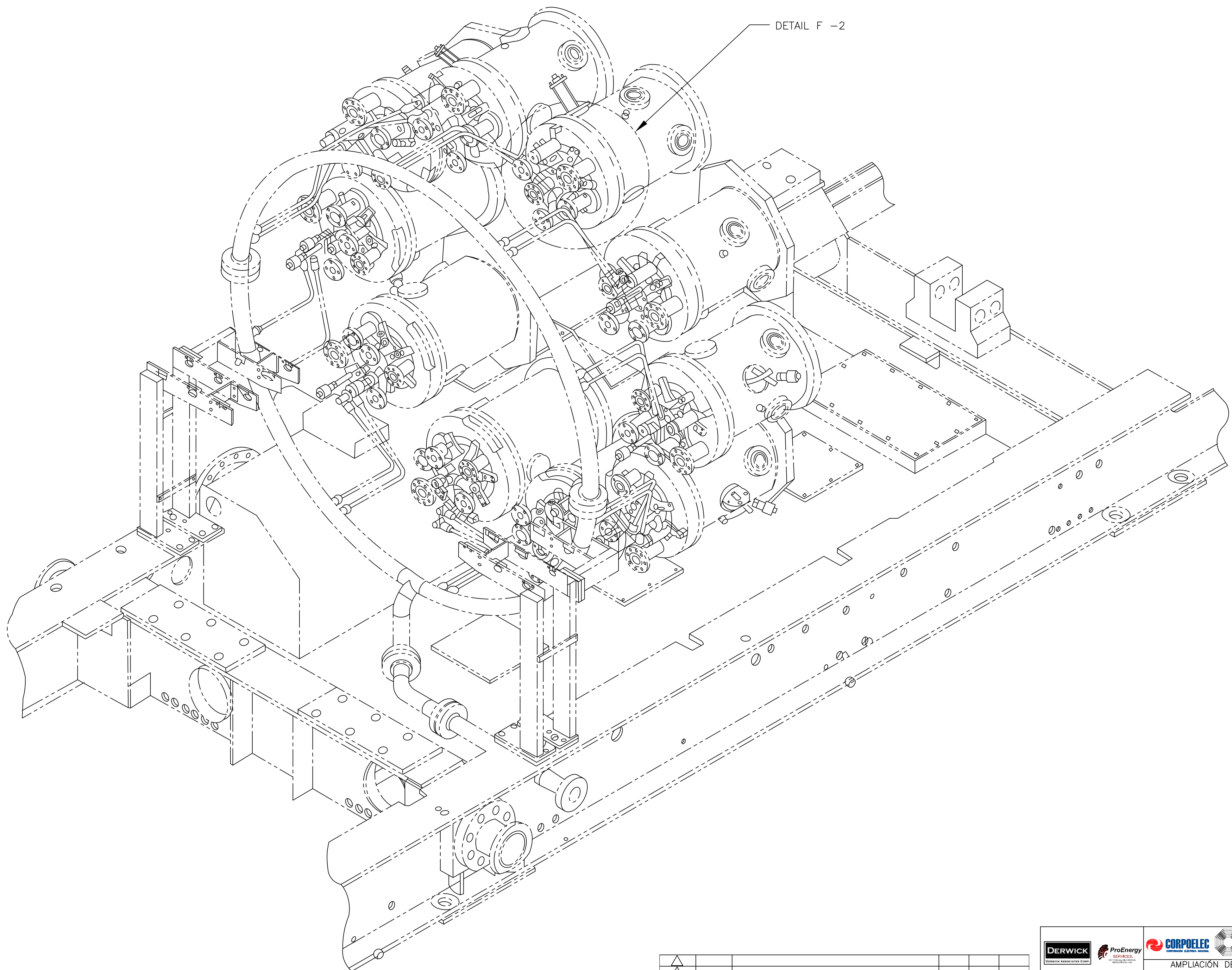
SECTION D-7 (SH 2)  
2 PLACES



DETAIL D-5 (SH 1)  
( 2 PLACES )



VIEW A -6 (SH 1)  
ENLARGED



ISOMETRIC VIEW

REV.	FECHA	REVISIONES O MODIFICACIONES	DIBUJO	REVISO	APROBO
07/04/11	ISSUED FOR FABRICATION. SEE NOTE-11, SHEET-1	SAB	CB	TK	
REF. FABRICANTE	FABRICANTE	O/C			

DERWICK	ProEnergy	COMPLET	SENECA
PROYECTO N°:	400-2006-1	PROYECTO:	AMPLIACIÓN DE LA CAPACIDAD DE GENERACIÓN Y TRANSPORTE DE ELECTRICIDAD EN LA ISLA DE MARGARITA
REVISADO:	C. Brown	REVISADO:	J. Castillo
DIBUJO:	S. Bouchard	DIBUJO:	ESC./PLOTED:
APPROBADO:	T. Koontz	APPROBADO:	M. Monticelli
PLANO N°:	AGM-02-0204-PLA-M-0027	PAGINA:	3 DE 3